



Elected Members of Killaloe Municipal District

Strategy & Work Plan

March 2023



Comhairle Contae an Chláir
Clare County Council



FOREWORD

This Killaloe Municipal District Elected Members' Strategy and Work Plan represents our agreed vision and work programme for the future planning, growth, and development of East Clare during our term as Elected Members.

This Plan, the first of its kind for the Municipal District, is an agreed strategy to achieve the shared vision we as Elected Members have for Killaloe Municipal District with the aim of enhancing the quality of life for the constituents we represent and for all people who live, work and visit East Clare.

Responding to the enhanced focus of delivery services at Municipal District level this strategy has been prepared and updated in March 2023 to reflect emerging trends, challenges and opportunities. The recently adopted *Clare County Development Plan 2023-2029* and the recently published Department's *Best Practice Recommendations for Local Authorities on the operation of Municipal Districts* provides an opportune moment to reflect on the significant work we as Elected Members have undertaken to date, and in particular, to further align our local Killaloe Municipal District level priorities and strategic objectives with new National and County policies. The welcoming of new communities to our Municipal District is a

key focus on this updated Strategy as is the consideration of the need for climate change mitigation and adaptation.

This Strategy and Work Plan also reinforces the critical role that our Municipal District Office in Scarriff and all Local Authority staff play in the planning and delivery of services at the local level for the betterment of East Clare and our County. Key to the achievement of our strategic economic, social, cultural and environmental objectives is collaboration also with a range of state and semi-state agencies, industry and in particular our citizens and local communities.

This Strategy sets out our commitment as Elected Members of Killaloe Municipal District to work tirelessly to drive economic growth, support business development, enhance our towns and villages and foster sustainable communities. Working together we can ensure that Killaloe Municipal District, East Clare and the County reaches its full potential.

Cllr Pat Burke

Cllr Joe Cooney

Cllr Tony O'Brien

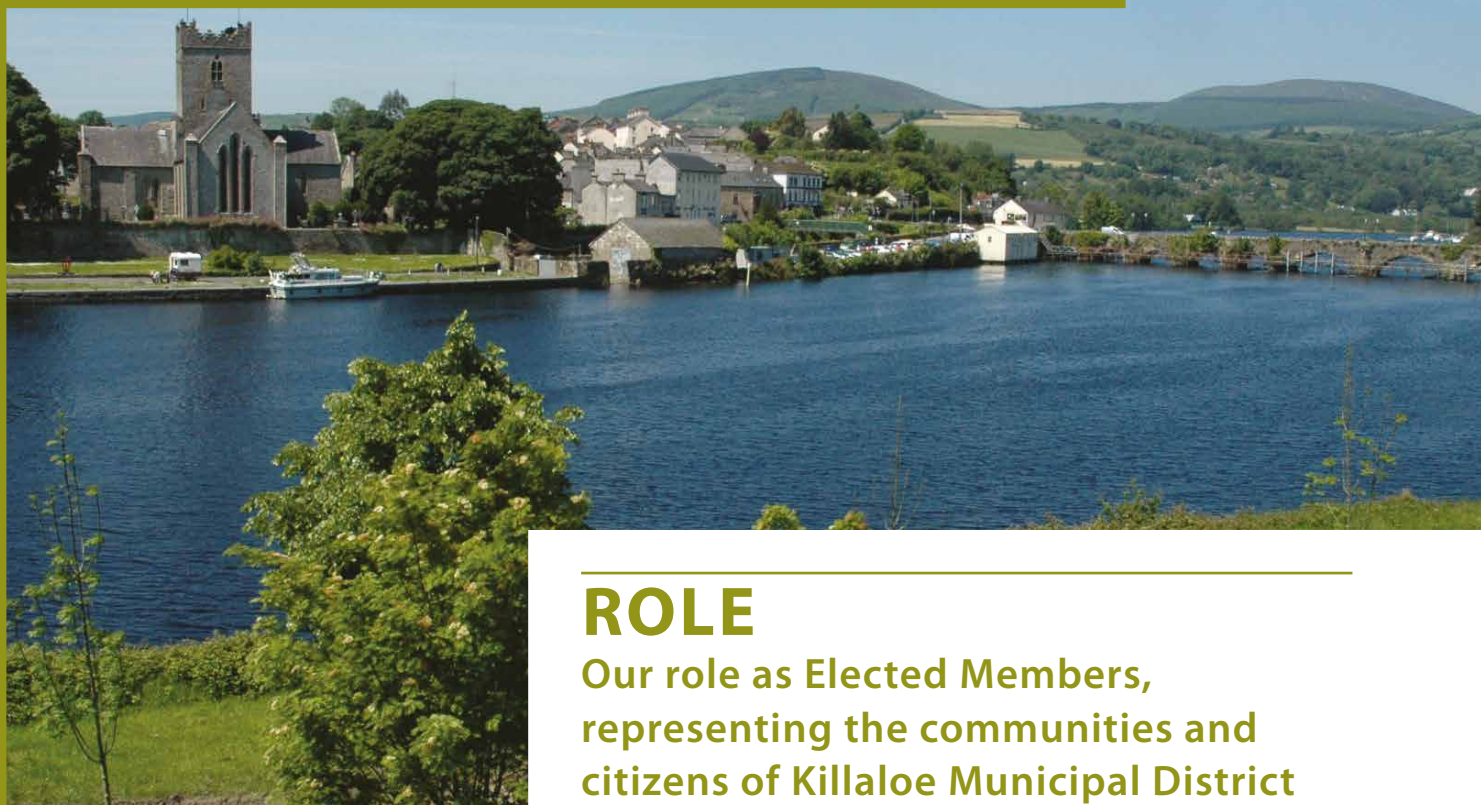
Cllr Alan O'Callaghan

Cllr Pat Hayes



VISION

Our vision as the Elected Members of Killaloe Municipal District is to maximise the opportunities for social, economic and tourism related development in all areas of Killaloe Municipal District creating a high quality of life and sustainable environment. Working in collaboration with colleagues and the Executive of Clare County Council we aim to deliver projects for East Clare and the Municipal District across the four key pillars of the Local Authority structure – Rural & Tourism Development, Physical Development, Social Development and Economic Development towns and villages and countryside.



ROLE

Our role as Elected Members, representing the communities and citizens of Killaloe Municipal District and the County is to lead, and ensure the delivery of, this strategic plan in partnership with Clare County Council Executive, other relevant agencies and community stakeholders.

BACKGROUND

Whilst not a Statutory Plan, we as Elected Members felt it prudent to put a Strategy and Workplan in place to emphasise the key objectives for the Municipal District over the life of this Council and beyond.

Workshops were facilitated in April 2021 through July 2021. These involved the Members of Killaloe Municipal District and the Executive of Clare County Council. Arising out of those workshops an agreed list of objectives are identified. In early 2023, following a mid-term review of the plan and, in particular having regard to updated National Policies and Guidelines eg Best Practice Recommendations for Local Authorities on the operation of Municipal Districts – November 2022, Climate Action Plan 2023, and updated County Plans eg Clare County Development Plan 2023-2029 this Strategy was updated to reflect priorities of the Municipal District, the Local Authority and the communities which we, the Members, represent.

This workplan is aligned to the objectives of the new Clare County Development Plan 2023 to 2029 and Corporate Plan of Clare County Council and aims to focus in on the Municipal District of Killaloe in a more targeted fashion with specific focus on regenerating our towns and villages and importantly supporting diversification through the MD in terms of growing tourism. This Strategy sets out our vision and objectives for East Clare and the Killaloe MD. The Strategy details the strategic goals and the supporting projects and mechanisms required for implementing and achieving those objectives. It has been prepared in the context of the current external and internal operating environment while ensuring flexibility to adapt to changing circumstances as they arise.

Strengthening local democracy and the enhancement of services delivered to the people at Municipal District level is a key consideration. Identifying the local needs and initiatives required to strengthen and

grow our communities and the welcoming of new communities to our Municipal District is a key focus on this updated Strategy. The consideration of the need for climate change mitigation and adaptation is embedded into all actions in this strategy.

Importantly, this Strategy does not represent an exhaustive list of all work items to be focussed on in the Municipal District. This plan does not focus on the day to day activities related to the functioning of the Municipal District such as the Schedule of MD works, Road Maintenance, Public counter function, Motor Tax functions, Housing Rents function etc. Whilst crucial to the success of maintaining an efficiently ran Municipal District, this plan deals primarily with the medium-long term strategic ‘bigger picture’ projects.

VALUES

The Elected Members of the Killaloe Municipal District are committed to:

The provision of strong, clear political leadership for the Municipal District

Work in collaboration with the Executive of Clare County Council to plan and deliver services and projects for the benefit of Killaloe MD and East Clare

Advocate and working to ensure increased funding streams into the Municipal District

Utilise our General Municipal Allocation for the benefit of the Municipal District.

Strengthening local democracy and increasing services available to the public at a local Municipal District level,

Placing a rural perspective at the heart of the planning and delivery of policies and services in the District

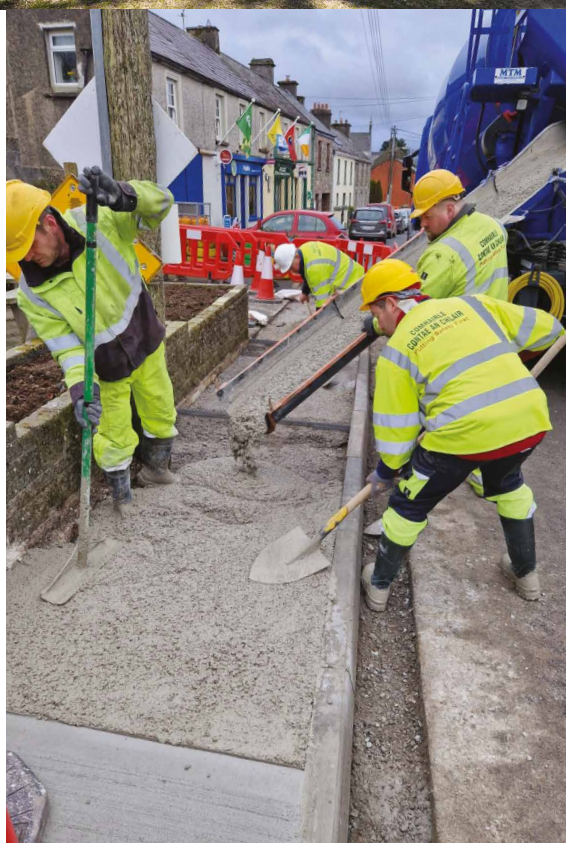
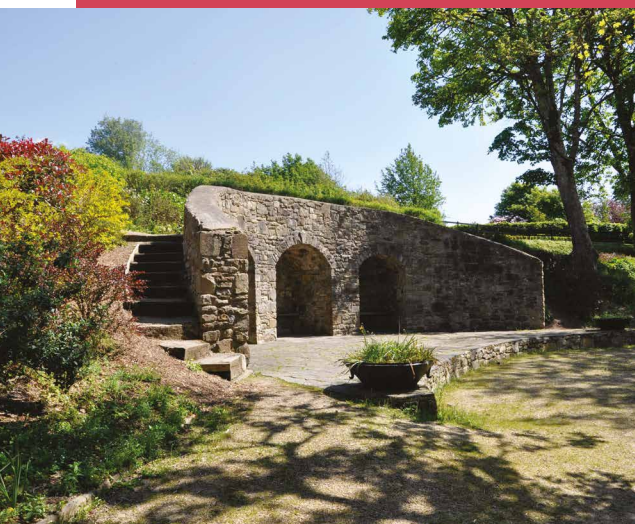
SUPPORTING RESOURCES IN THE KILLALOE MUNICIPAL DISTRICT

Clare County Council is committed to supporting the social, cultural, rural and economic development of Killaloe MD and East Clare. In that regard the values, objectives and priority actions set out in this Plan is aligned to the Corporate Plan of the Council. The Elected Members of Killaloe MD will endeavour to include projects and priority actions as listed, for consideration into future annual budgets and into the multi annual capital planning framework of the Council.



WORKING WITH OUR COMMUNITIES

The Elected Members of Killaloe Municipal District strongly value the importance of collaboration with the towns village and rural communities that make up the District. The Elected Members will work to align the Corporate objectives of Clare County Council and the operations of the Municipal District with the needs of the communities of East Clare. Elected Members also recognise the need to collaborate with all key stakeholders and other public bodies and semi state agencies operating within the Killaloe Municipal District to identify the local needs, initiatives and actions required to strengthen and grow our communities, villages and towns in a sustainable manner. In view of the emerging challenges arising from the war in Ukraine the Elected Members also recognise the contribution being made by communities across the MD and County in welcoming, hosting and providing services to significant number of arrivals from Ukraine and other countries.



PRINCIPLE THEMES AND WORK PROGRAMME

The following key strategic themes has informed the direction of the Municipal District priorities and workplan. Each strategic project identified is underpinned by at least one of the themes below. These themes will be central to the design and delivery of Local Authority services in the Municipal District of Killaloe



Enhancing East Clare as a place to live, work and recreate:

Enhance quality of life in East Clare by ensuring adequate development in strategic physical and social infrastructure as well as a commitment to forward plan to meet the needs of the Area. Focusing on Tourism growth in the Area in parallel with the development of physical infrastructure needed to support this themed objective.

Preserving our Environment and Mitigating the effects of Climate change at a Municipal Level

The target of a 50% reduction in carbon emissions by 2030 is supported by the Municipal District. Policy will be to Climateproof all further projects as well as existing projects and infrastructure.

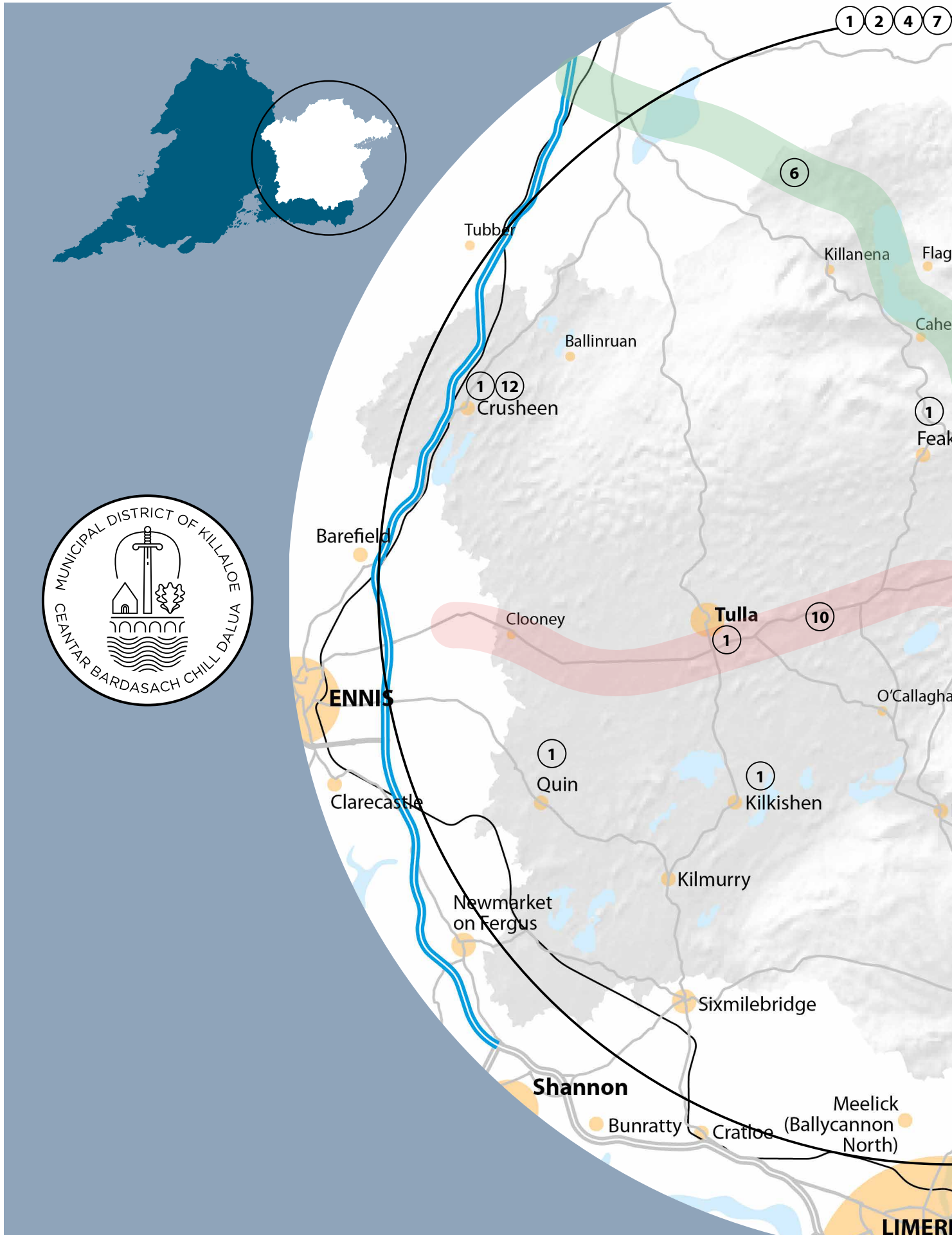
Creation of an Environment in East Clare that supports sustainability

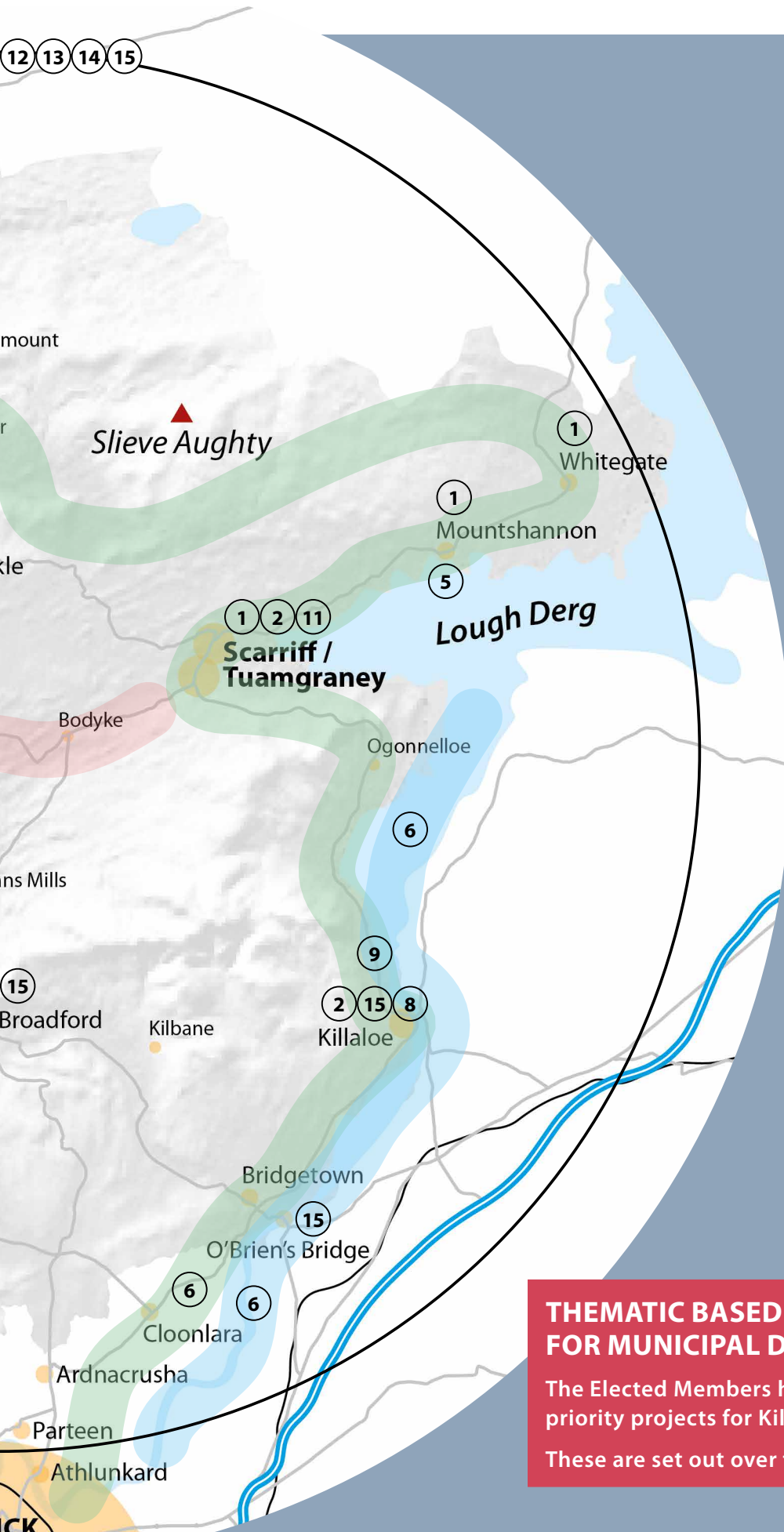
Supporting sustainable business, enabling population growth by the promotion of town and village centre renewal, the provision of housing and reuse of housing & commercial premises. Working towards the goal of East Clare towns being supporting hubs and economic and social drivers for the Rural Area.

Strengthen local democracy and enhance delivery of services at a local level.

In line with the provisions of the Local Government Act 2014, the Elected Members will work towards strengthening local democracy. Municipal Districts are an important part of the planning and delivery of services at the local level and can be a significant driver of coordinated town, village and rural development, and enhanced community engagement. The role of Killaloe Municipal District in promoting economic, social and cultural regeneration and the development of their towns and hinterlands will be supported and strengthened.







STRATEGY & WORK PLAN PROJECTS

1. TOWN & VILLAGE RENEWAL SCHEMES AND PLANS TO SEEK TO DEVELOP IN COLLABORATION WITH COMMUNITIES VILLAGE ENHANCEMENT PLANS FOR CRUSHEEN, FEAKLE, KILKISHEN, MOUNTSHANNON, QUIN AND WHITEGATE
2. PROMOTION AND ESTABLISHMENT OF DIGITAL HUBS ACROSS THE MUNICIPAL DISTRICT'S TOWNS AND VILLAGES WITH A PARTICULAR FOCUS ON SCARRIFF AND KILLALOE
3. SUSTAINABLE HOUSING
4. CLIMATE ACTION PROJECTS
5. INIS CEALTRA
6. GREENWAY AND BLUEWAY PROJECTS
7. FURTHER EDUCATION AND SKILLS
8. IMPLEMENT THE KILLALOE—BALLINA TOWN ENHANCEMENT AND MOBILITY STRATEGY (2022)
9. TWO MILE GATE / BALLYCUGGERAN AMENITY
10. R352 ENNIS TO SCARRIFF
11. SCARRIFF TOWN PROJECT
12. ENHANCE DELIVERY OF SERVICES TO COMMUNITIES AND CITIZENS AT MD LEVEL
13. CAPACITY BUILDING COMMUNITIES
14. ENHANCE SUSTAINABLE MOBILITY AND CONNECTIVITY TO EAST CLARE FROM THE MID-WEST REGION
15. WASTEWATER INFRASTRUCTURE DEFICITS

THEMATIC BASED WORK PROGRAMME FOR MUNICIPAL DISTRICT:

The Elected Members have agreed the following priority projects for Killaloe Municipal District.

These are set out over the following pages:

Town & Village Renewal Schemes and Plans

OUTLINE

The preparation of town and village renewal schemes targeting dereliction & vacancy with a specific focus on Tulla and Scarriff

The completion of a pilot regeneration project targeting local derelict buildings for residential / community use with particular focus on Tulla and Scarriff and Killaloe

KMD STRATEGIC THEME

Enhancing East Clare as a place to live, work and recreate.

Creation of an Environment in East Clare that supports sustainability



Promotion and establishment of Digital Hubs across the Municipal District's towns and villages with a particular focus on Scarriff and Killaloe

OUTLINE

Enhancement and Development of Digital Hubs across the District's towns and villages with a particular focus on Scarriff and Killaloe.

These projects should work with business leaders and community groups to ensure and economic and social benefit for the towns of East Clare.

Focus is to be on Scarriff and Killaloe initially to supplement Hubs already created in other East Clare locations.

KMD STRATEGIC THEME

Enhancing East Clare as a place to live, work and recreate

Creation of an Environment in East Clare that supports sustainability

Building our towns and villages so that they can become supporting hubs

Strengthen local democracy and enhance delivery of services at a local level.



Sustainable Housing

OUTLINE

To advocate for the delivery of a range of Housing solutions across the Municipal District with a particular focus on Affordable Housing.

To work with property owners to bring back into use derelict properties, in particular in our towns and villages

To work with all stakeholders to maximize the opportunities, take up and the delivery of the Croí Cónaithe Fund – Vacant Property Refurbishment Grant across the MD

To advocate nationally for a range of initiatives and pilot schemes for the re-use of vacant and derelict properties as housing solutions in Killaloe MD

KMD STRATEGIC THEME

Enhancing East Clare as a place to live and work.

Creation of an Environment in East Clare that supports sustainability

Enhancing East Clare as a place to visit



Climate Action Projects

OUTLINE

Develop a pilot project across the Municipal District that supports Climate Mitigation and Climate Change Adaption .

Seek the reduce of energy usage of the Municipal District Office

Investigate possibility of installing EV charging points at the public library /MD office and at locations across the MD in particular Killaloe.

Advocate for the conversion of Council vehicles into Electric Vehicle in a phased manner

Killaloe MD will seek to collaborate with other stakeholders in such a process.

KMD STRATEGIC THEME

Building a sustainable economy that is carbon neutral

Supporting the Environment and Climate crisis at a Municipal Level

Enhancing East Clare as a place to live, work and recreate.



Inis Cealtra

OUTLINE

To ensure the delivery of the Inis Cealtra/ Holy Island Tourism and Visitor project, ensuring the area will be developed through a balanced and sustainable management approach to providing access for visitors, creating sustainable benefit for the local communities

KMD STRATEGIC THEME

Creation of an Environment in East Clare that supports sustainability
Enhancing East Clare as a place to live, work and recreate in



Greenway and Blueway Projects

OUTLINE

Killaloe MD recognises the importance of the Lough Derg Blueway and Greenway Project. Killaloe MD will work with Waterways Ireland to support the delivery of this project over the coming years and maximise opportunities for settlements and communities along the route

Killaloe MD also wish to examine possibilities for further linkages of our towns and villages along this route.

Further Develop Plans for Blueway projects in the MD, including Lough Graney.

Investigate possibility of creating and marketing a Cycle Track along the existing woodland and forest trail network from North East Clare, Slieve Aughties to Burren National Park via Lough Graney, Lough Cultra and South Galway.

KMD STRATEGIC THEME

Creation of an Environment in East Clare that supports sustainability
Enhancing East Clare as a place to live, work and recreate in



Further Education and Skills

OUTLINE

With the location of the LCETB and other training providers located in East Clare, enhance linkages with Further and Higher Education Institutes and Training providers to maximise opportunities for social and educational development of East Clare and Killaloe MD, creating a compelling case for inward investment and ensure that tourism, rural and other economic development projects and initiatives can have direct employment benefits to the area.

KMD STRATEGIC THEME

Enhancing East Clare as a place to live, work and recreate in.

Strengthen local democracy and enhance delivery of services at a local level.



Implement the Killaloe—Ballina Town Enhancement and Mobility Strategy (2022)

OUTLINE

The Killaloe-Ballina Town Enhancement and Mobility Strategy sets out an agreed pathway for transformative change for these two towns.

Killaloe MD will collaborate with Nenagh MD in bringing forward specific aspects of this plan for funding and delivery for the benefit of all the community on both sides of the Shannon.

These will include Public Realm improvements to Killaloe, its streets and laneways

Provide a sustainable approach to car-parking and mobility around Killaloe, including the

pedestrianisation of the existing bridge in line with the opening and operation of the Killaloe Bypass and Bridge Crossing.

KMD STRATEGIC THEME

Expanding the tourism product to ensure broader visitor experience throughout MD

Enhancing East Clare as a place to live work and recreate in.

Creation of an Environment in East Clare that supports sustainability

Building our towns and villages so that they can become supporting hubs

Strengthen local democracy and enhance delivery of services at a local level.



Two Mile Gate / Ballycuggeran Amenity

OUTLINE

Develop a Ballycuggeran Tourism Enhancement and Visitor Amenity Management Plan for further growth at East Clare’s premier Amenity. This would be a Plan-led approach to the development of the site and surrounding area and its operation and management.

The plan should harnesses its location adjoining Lough Derg and Moylussa maximising opportunities for Watersports, Recreation and Mountain Biking, and linkages with

adjoining UL Activity Centre, Coillte Trails, Killaloe Sailing Club

This is to be done in conjunction with the upgrading of physical infrastructure at the location including Traffic Calming and additional parking.

KMD STRATEGIC THEME

Enhancing East Clare as a place to live,work and recreate in.

Expanding the tourism product to ensure broader visitor experience throughout MD



R352 Ennis to Scarriff

OUTLINE

Upgrading of R352 Scarriff to Ennis Regional Road at particular problematic locations with particular focus on the widening and safety.

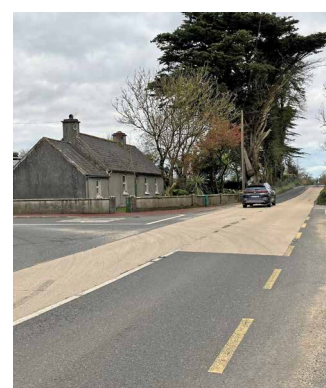
The R352 is the main artery to East Clare. Killaloe MD recognise the need for upgrading over the medium term

and will focus on funding streams in this regard

KMD STRATEGIC THEME

Building our towns and villages so that they can become supporting hubs

Enhancing East Clare as a place to live, work and recreate in.



Scarriff Town Project

OUTLINE

Physical upgrade of Public Realm in Scarriff Town Market Square to enhance the visitor experience, pedestrian mobility and accessibility of the square in conjunction with the provision of a new Town Car Park

This project will seek a collaboration with Community and Business interests in the Town.

KMD STRATEGIC THEME

Building our towns and villages so that they can become supporting hubs

Expanding the tourism product to ensure broader visitor experience throughout MD

Enhancing East Clare as a place to live, work and recreate in.



Enhance delivery of services to communities and citizens at MD level

OUTLINE

Increase the range of services and functions delivered at Municipal District Level in line with the provisions of the Local Government Act, including:

Monthly pre-planning clinics to be held in the MD office in Scarriff

Require updates of strategic Killaloe MD & East Clare projects at MD Meetings

Enhance the IT capabilities and usage to enable on-line streaming of Killaloe MD Meetings to a wider audience

Increase the use of digital media and communications and the introduction of an electronic Customer Relationship Management (CRM) system to all staff across the MD

KMD STRATEGIC THEME

Strengthen local democracy and enhance delivery of services at a local level.



Capacity Building Communities

OUTLINE

Maintain and improve ties between Community groups & the Council in the MD.

Assess towns and villages with a current lack of organisation in this regard and develop capacity in these areas through the Rural Development Officers work. This will enable these villages to fully partake in initiatives that the Council wishes to further.

Support Clare County Council's Ukrainian Services Development Team, our communities and local and voluntary groups to coordinate the response to the Ukrainian crisis, advocating for supports and services to

be provided locally by the relevant agencies.

KMD STRATEGIC THEME

Enhancing East Clare as a place to live work and recreate in.

Building our towns and villages so that they can become supporting hubs

Strengthen local democracy and enhance delivery of services at a local level.



Enhance Sustainable Mobility and connectivity to East Clare from the Mid-West region

OUTLINE

Advocate for the reopening by Irish Rail of the existing Crusheen Railway station which would increase passenger numbers and connectivity along the Western Rail Corridor between Galway City/Athenry and Limerick City and create socio-economic opportunities and benefits to all residents, commuters and students, as well as assisting to meet our ambitious climate action objectives.

Support the delivery of the Killaloe Bypass.

Support the continued expansion and delivery of the TFI Local Link Limerick Clare and Bus Eireann Bus services within East Clare and to the county and national network.

Improve connectivity and pedestrian/cycle mobility between the villages of Bridgetown and O'Briens Bridge and

their shared community services and amenities

Enhance the provision of cycle laneways, cycle tracks between settlements and safe footpaths within our towns and villages.

KMD STRATEGIC THEME

Strengthen local democracy and enhance delivery of services at a local level.

Enhancing East Clare as a place to live, work and recreate in.

Expanding the tourism product to ensure broader visitor experience throughout MD



Wastewater Infrastructure Deficits

OUTLINE

Killaloe MD recognize the need in relation to the provision of fit for purpose sewerage infrastructure for the towns and villages of the district. This will ensure an environment which enables growth in the long term.

In this regard, it will be an objective of Killaloe MD to seek to further progress via Irish Water the provision of sewerage facilities across the towns and villages of East Clare with particular emphasis on Broadford and Killaloe & O'Brien's Bridge.

KMD STRATEGIC THEME

Enhancing East Clare as a place to live, work and recreate.

Creation of an Environment in East Clare that supports sustainability

Supporting the Environment and Climate crisis at a Municipal Level



IMPLEMENTATION

The implementation of this Strategy and Work Plan requires the cooperation and participation of all stakeholders and we as Elected Members together with the staff in Killaloe Municipal District and Clare County Council will undertake a key leadership role to progress and secure the implementation of the Plan.

In providing a leadership role, we will aim to foster a collaborative approach with citizens, communities, stakeholders, sectoral interests, partners, governmental and non-governmental agencies and adjoining authorities to achieve collective support and successful implementation of our Strategy.

We are committed to strengthening local democracy and to working with the staff in Killaloe Municipal District to enhancing the range and of services delivered at local level and promoting economic, social and cultural development of our Municipal District and East Clare.



Anne Haugh

Director of Services,
Social Directorate and
Killaloe Municipal
District

Brian McCarthy

Senior Planner &
Killaloe Municipal
District Co-ordinator

Derek Troy

A/Senior Executive
Engineer

Declan Flanagan

Executive Engineer

Pauline Costelloe

Staff Officer

Michelle Fitzgerald

Executive Technician

Michael Ryan

Senior General Services
Supervisor

Sean O'Grady

Senior General Services
Supervisor

John O'Brien

Senior General Services
Supervisor

Kitty Moroney

Clerical Officer

Deirdre Sampson

Clerical Officer

Padraig Myles

Caretaker